



**Smart
Designer
Light**



Trend Makers®



3 Simple Steps to Set-Up and Protect



Download the
HOMEi
App



Install Smart Designer
Light onto an
outside wall.



Connect your
Smart Designer
Light to the App by
fast connect.

NOTE: To ensure proper use of your Smart Designer Light please follow the instructions detailed in this set-up guide.

Setting Up Your



Smart
Designer Light

Step 1: Download the HOMEi App

1. Download the **HOMEi** app in the Apple® App Store, Google® Play Store, or use your phone camera to scan the QR code below to open the app store of your mobile phone.

Apple® App Store or
Google® Play Store



Scan Code





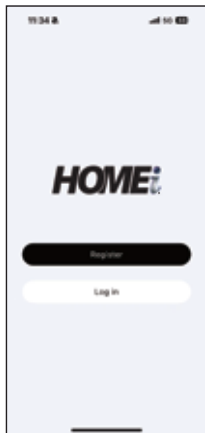
Step 1: Download the HOMEi App

1. In order for your Smart Designer Light to work properly, select **Allow** if you see the prompt: **HOMEi** would like to find and connect to devices on your local network.
2. Create your account and select **Continue**.
3. Follow the App prompts to set up your password and register your camera/device. Then **Log In** to your **HOMEi** app.

Passwords must contain numbers and letters, be no less than six digits, and cannot contain special characters.

FORGOT PASSWORD:

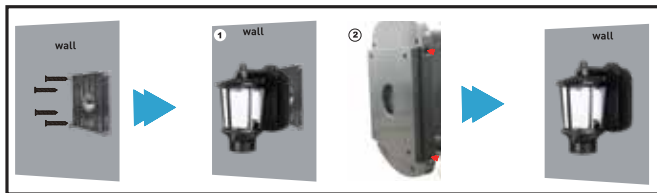
In the App click on "Forgot Password" and follow the account retrieval process. You will receive an email with a temporary code. Enter the temporary code. You will receive a second email with your password.



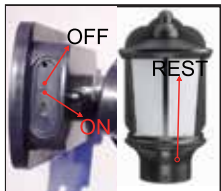


Step 2: Mounting the Smart Designer Light

1. Use the provided screws to secure the mounting plate to a wall.
2. Then use the provided screws secure your Smart Designer Light to the mounting plate.



3. Turn on the switch, your Smart Designer Light will flash.
4. Press the reset button on the front face of your Smart Designer Light for about 3 seconds wait your Smart Designer Light blink twice quickly means reset successful.



This unit is equipped with lithium batteries. Make sure that the camera is charged prior to installation



Step 3: Connect Your Smart Designer Light to the App

1. Press the  **sign** in the App



2. You will discovered the ID number of the device, select "add to".



3. Select or enter your location's WiFi name, enter the Wi-Fi® password. If your WiFi is 5GHz, please set it to be 2.4GHz by tapping Change Wi-Fi®, then press Next Step in the App.





Step 3: Connect Your Smart Designer Light to the App

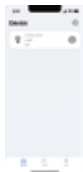
4. The App will countdown until your Smart Designer Light and mobile device are connected to your Wi-Fi® network.



5. Enter a name for your Smart Designer Light, then click Done.



6. Now, you are ready to start using your Smart Designer Light!





How to Use your Smart Designer Light

To get started, open your **HOMEi** app and follow these easy steps:

1. Choose the device you want to control. (as in Figure 1).
2. Tap the Power switch control light turn ON or OFF (as in Figure 2).
3. Select Brightness to adjust light brightness from 0%-100% (as in Figure 3).
4. Select Timer to setting Timing (as in Figure 4-5).



Fig. 1

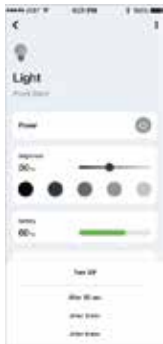


Fig. 2

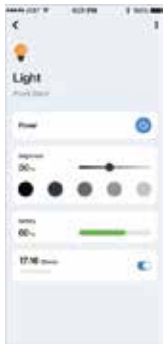


Fig. 3



Fig. 4

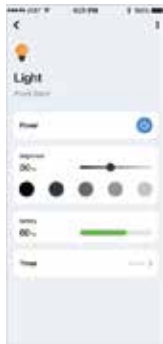


Fig. 5

Setting Up Your



Smart Designer Light

Warning: Changes or modifications to this unit not expressly approved by the party responsible for compliance could void the user's authority to operate the equipment.

NOTE: This equipment has been tested and found to comply with the limits for a Class B digital device, pursuant to Part 15 of the FCC Rules. These limits are designed to provide reasonable protection against harmful interference in a residential installation. This equipment generates, uses and can radiate radio frequency energy and, if not installed and used in accordance with the instructions, may cause harmful interference to radio communications.

However, there is no guarantee that interference will not occur in a particular installation. If this equipment does cause harmful interference to radio or television reception, which can be determined by turning the equipment off and on, the user is encouraged to try to correct the interference by one or more of the following measures:

- Reorient or relocate the receiving antenna.
- Increase the separation between the equipment and receiver.
- Connect the equipment into an outlet on a circuit different from that to which the receiver is connected.
- Consult the dealer or a qualified radio/TV technician for help.

Setting Up Your



Smart Designer Light

This device complies with Part 15 of the FCC Rules. Operation is subject to the following two conditions:

- (1) this device may not cause harmful interference, and
- (2) this device must accept any interference received, including interference that may cause undesired operation.

FCC RF Radiation Exposure Statement Caution:

To maintain compliance with the FCC's RF exposure guidelines, place the product at least 20cm from nearby persons.

FCC ID: 2A88H-0033052282

IC: 32423-ISB06

HVIN: ISB-06



**Smart
Designer
Light**



Wi-Fi®



Motion
Detection



Mobile
Alert



Secure
App

For instructional videos and FAQ's please visit
icustomerservice.com to learn more.

Distributed by Trend Makers, LLC • Fort Walton Beach, FL 32547
©2024 Trend Makers, LLC
Made in China

All Rights Reserved.



WARNING: Cancer and Reproductive Harm - www.P65Warnings.ca.gov

By purchasing this product, you accept Trend Makers' terms and conditions including arbitration agreement.
See enclosed for arbitration agreement. See trendmakersinc.com/arbitration-agreement for details.